



AN ISO 9001



COMPANY



Letter from our M.D.

Firstly I would like to express my sincere gratitude to those who have been with us for the past 16 years since our inception. We reckon that your constructive criticism, genuine ideas and factory-site coordination has helped us to develop a unique system for Middle East. As a result, our cable management system has been developed for quick installation and thereby reducing the overall project cost for the contracts. We used European technology to emerg-ing Gulf markets and it did yield successful results.

We are proud to say that we are the first manufacturer of cable support system in Gulf commercially and our products are installed in various prestigious projects in and out of Gulf for the past 16 years.

Being an ISO 9001 company we believe that quality is not a watchword, but a practical way of engineering a product to perfection. We have put sincere efforts to see that quality is assured at each stage of production and till the final product is delivered to customer. Not only we ensure that we meet the customer specification, quality and delivery, but even exceed beyond their expectation.

Our design department is consistently trying to develop better designs which will make installation very simple as well as aesthetic. In an effort to satisfy the customer, we have started our most modern in-house powder coating plant and galvanizing plant which is custom made for Cable management systems. This will ensure that you will get a final product which is fully controlled by us. This way we are able to supply quality materials at a very reasonable price.

We are looking forward to your continued patronage in the future also as you did in the past.

Yours Sincerely

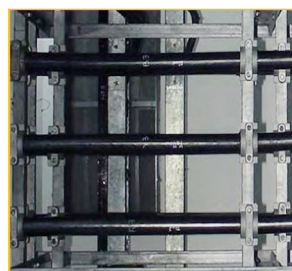
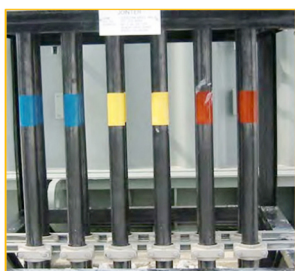
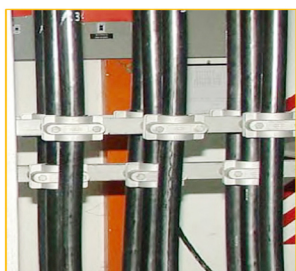
Chris T Ruddle

Managing Director



Contents

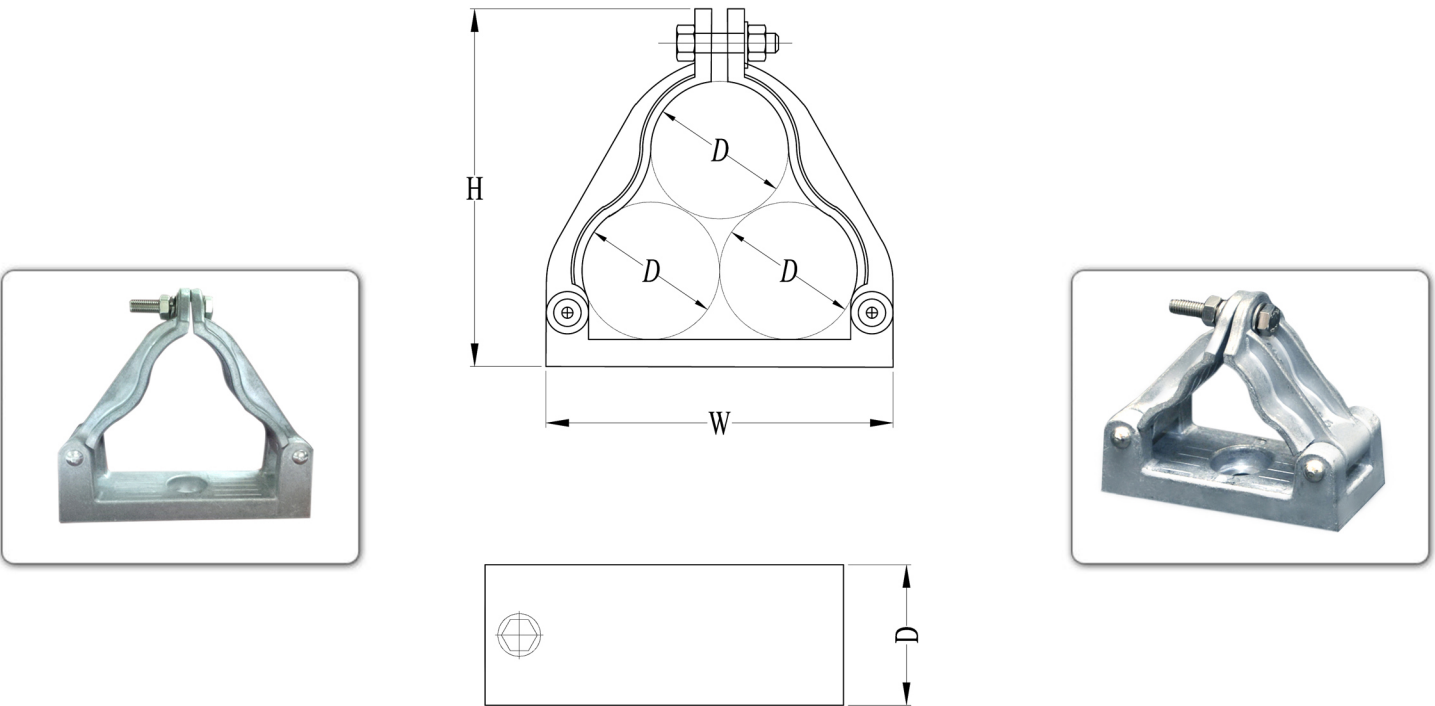
- Trefoil Cleat3
- Two bolt Cleat.....4
- Strap Type Cleat.....5



TREFOIL CLEAT HINGE TYPE

Trefoil cleats made for a three cable configuration are manufactured from LM 6 grade aluminium. The product can be epoxy coated for use in harsh environments, such as sea air or chemical atmosphere. All hardwares supplied with Trefoil Cleats are SS316.

Technical Drawing and Item Code



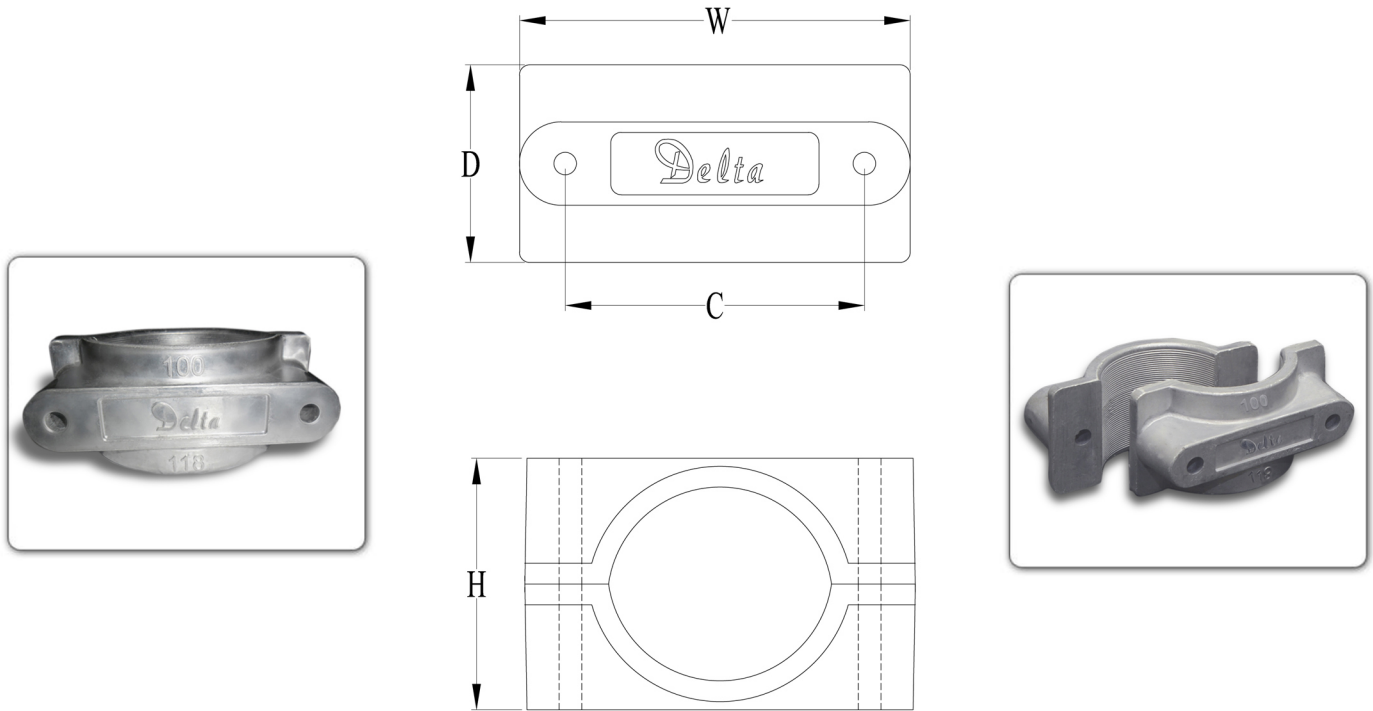
Item Code	Cable Diameter Range (mm)	Dimensions in 'mm'			Fasteners HBNW
		W	H	D	
2M-CLT-TF-HING-18.0-21.0	18.0-21.0	73	62	40	M6
2M-CLT-TF-HING-21.1-24.1	21.1-24.1	81	70	40	M6
2M-CLT-TF-HING-24.2-27.2	24.2-27.2	90	79	45	M8
2M-CLT-TF-HING-27.3-30.3	27.3-30.3	97	88	45	M8
2M-CLT-TF-HING-30.4-33.4	30.4-33.4	103	90	45	M8
2M-CLT-TF-HING-33.5-36.5	33.5-36.5	117	100	50	M8
2M-CLT-TF-HING-36.6-39.6	36.6-39.6	123	106	50	M8
2M-CLT-TF-HING-39.7-42.7	39.7-42.7	130	111	60	M8
2M-CLT-TF-HING-42.8-45.8	42.8-45.8	136	122	50	M8
2M-CLT-TF-HING-45.9-48.9	45.9-48.9	142	124	50	M8
2M-CLT-TF-HING-49.0-52.0	49.0-52.0	148	137	50	M8
2M-CLT-TF-HING-52.1-55.1	52.1-55.1	155	140	50	M8
2M-CLT-TF-HING-55.2-58.2	55.2-58.2	160	144	50	M8
2M-CLT-TF-HING-58.3-61.3	58.3-61.3	168	153	55	M10
2M-CLT-TF-HING-61.4-64.9	61.4-64.9	187	165	55	M10
2M-CLT-TF-HING-65.0-68.5	65.0-68.5	192	174	55	M10

Hardware required to fix the base of cable cleat to the support should be ordered separately based on actual site requirement.

TWO BOLT CLEAT FOR SINGLE CABLE

Our cast aluminum alloy cable cleats are designed for tough performance as per site requirement are manufactured to LM6 grade. The product can be epoxy coated for use in harsh environments, such as sea air or chemical industries . Neoprene liners are available on request.

Technical Drawing and Item Code



Item Code	Cable Diameter Range (mm)	Dimensions in 'mm'				Fasteners 2 set HBNW
		W	H	D	C	
2M-CLT-15-28	15-28	70	24	30	50	M8
2M-CLT-28-35	28-35	89	45	53	61	M10
2M-CLT-36-48	36-48	106	56	63	74	M10
2M-CLT-46-62	46-62	124	76	75	85	M10
2M-CLT-60-82	60-82	137	86	72	101	M10
2M-CLT-80-100	80-100	155	104	75	124	M10
2M-CLT-100-118	100-118	174	124	75	136	M10



To avoid direct connection between Cleat and Cable **Rubber Beadings** are used. If required order separately.
Eg: Rubber Beading for 100x118mm Item Code should be: EPDM-CLT-3-100-118

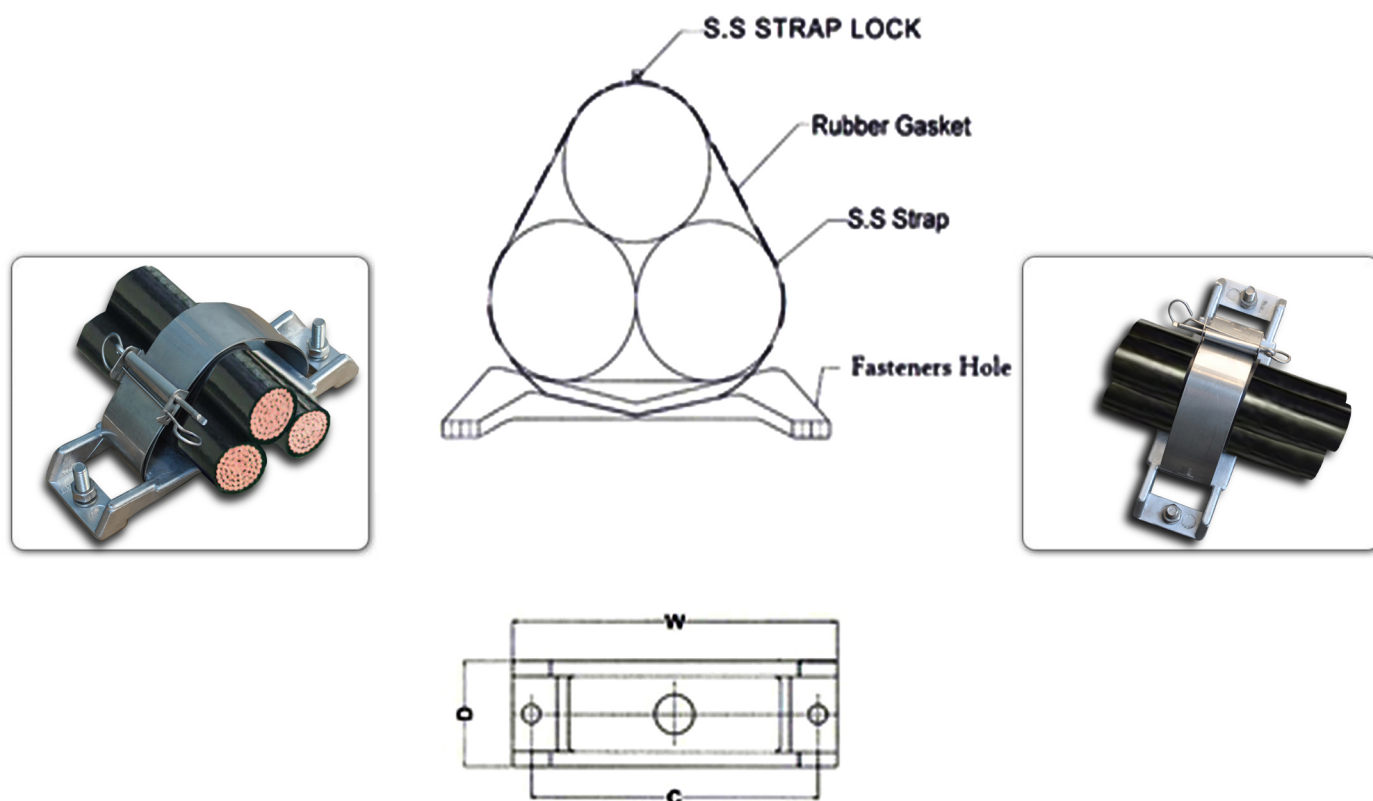
Both Parts of Cable Cleats are joined with 2sets of Hexagonal Bolts, Hexagonal Nut and Flat Washers.
Based on cable size and site condition customer should order this seperately as per their requirement.

DELTA CABLE CLEAT- STAINLESS STEEL STRAP TYPE

MULTI CABLE STAINLESS STEEL CLEAT STRAP TYPE

This Multi Cable Stainless Steel Strap Type cleats are made with aluminium alloy LM6 with base and top strap with Stainless Steel. This is used in horizontal applications mainly for flexibility in multiple cables. All nuts and bolts are SS316. Locking Clips will be provided by us.

Technical Drawing and Item Code



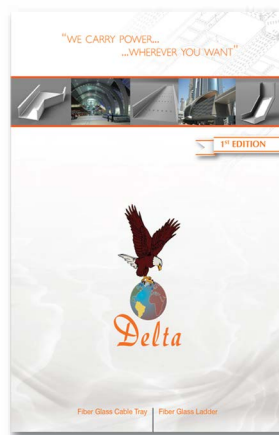
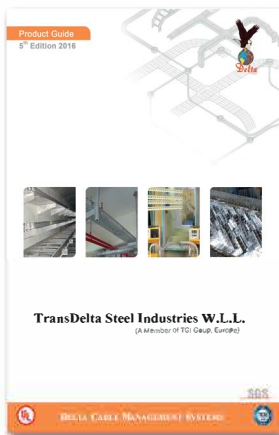
Item Code	Cable Diameter	Dimensions in 'mm'			Fastners 2 set HB/N&W
	Range(mm)	W	D	C	
MC-CLT-STRAP-30-60	30-60	170	70	145	M10
MC-CLT-STRAP-50-80	50-80	215	70	190	M10
MC-CLT-STRAP-80-120	80-120	276	80	251	M12
MC-CLT-STRAP-120-160	120-160	356	80	331	M12

Hardware required to fix the base of cable cleat to the support should be ordered seperately

[illegible]



Please refer our other Product Catalogues too...



Supplier

M/s. TRANSPOWER W.L.L

A member of TGI Group Europe

www.transpowerqatar.com

Contact Details

PO Box: 80533

Email: transpower@tpqtr.com

Tel: +974 44812702 / Fax: +974 44812708